

JOLT PANEL FX



Light Efficiency:

67 Lumen/Watt

Light Quality:

CRI: 84.5

Color Temperature:

7416 K

Output: 13579 lm

Peak: 8326 cd

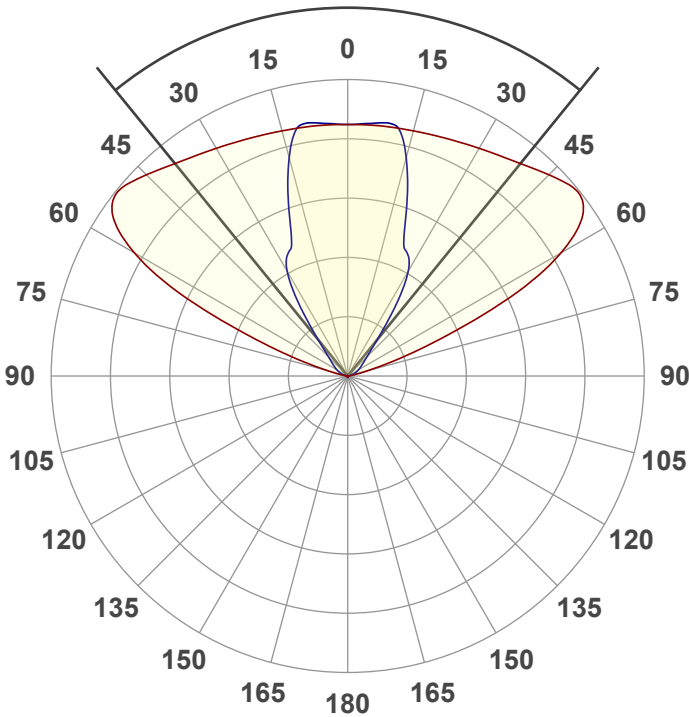
Power: 202.7 W

PF: 0.97



Beam Angle

78.2°



Test:

Full On

Date:

1/11/2023

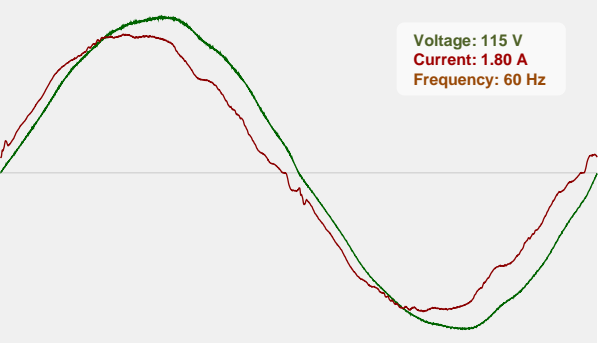
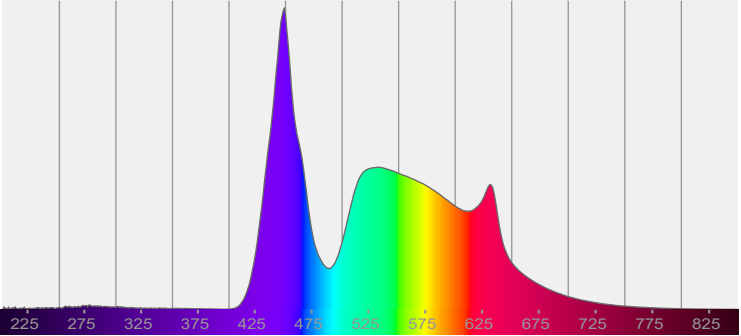
Note:

CIE 1931
x: 0.303
y: 0.307

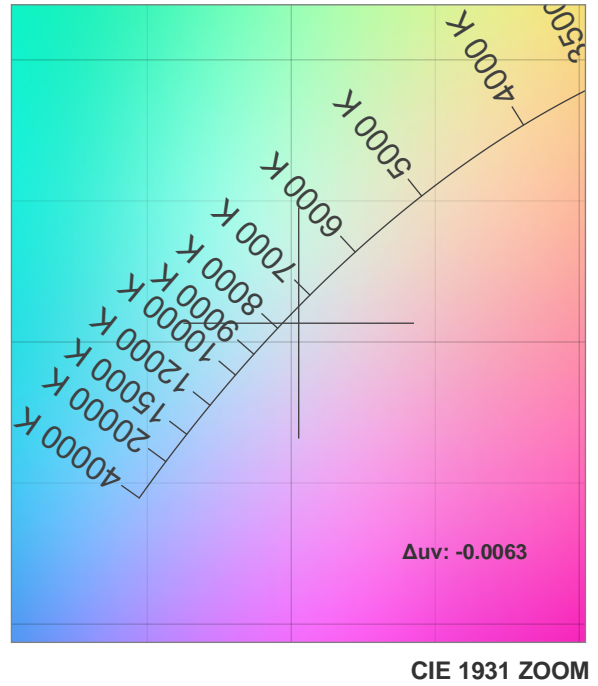
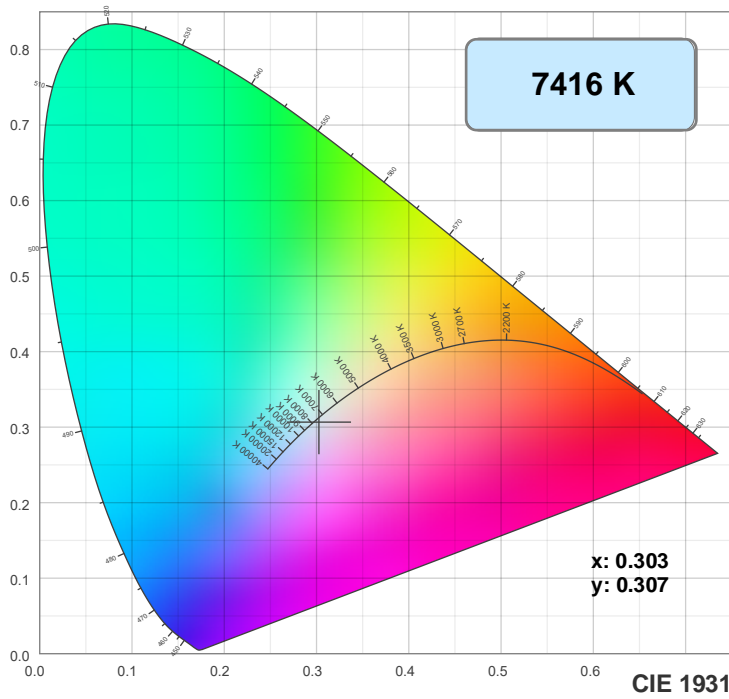
Spectra

Dominant Wavelength: 434nm

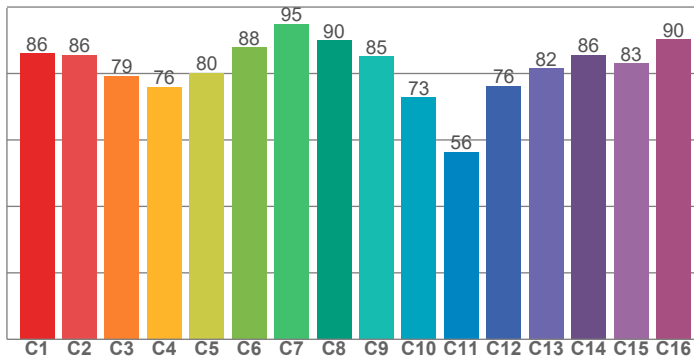
Power



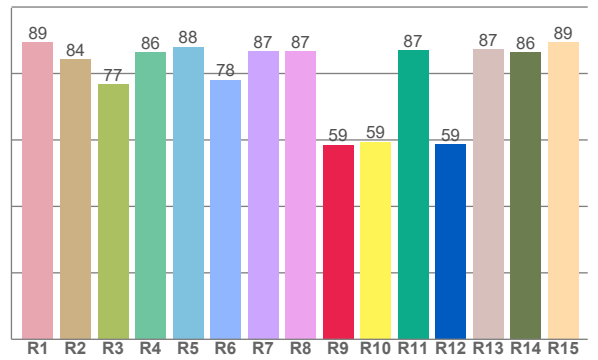
Color Details



TM30: 81.5



CRI: 84.5 (R1-R8)



CRI R values, only R1-R8 are used to calculate final CRI value

R1	R2	R3	R4	R5	R6	R7	R8	R9	R10	R11	R12	R13	R14	R15
89.3	84.4	76.7	86.4	88.1	78.1	86.6	86.6	58.5	59.4	87.0	58.7	87.2	86.3	89.3

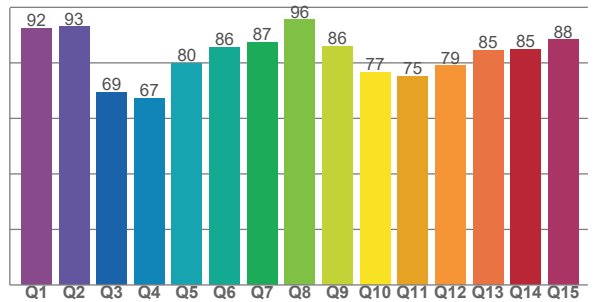
TM30 C values, 16 binned values out of total of 99 C values

C1	C2	C3	C4	C5	C6	C7	C8	C9	C10	C11	C12	C13	C14	C15	C16
86.0	85.5	79.3	75.9	80.2	87.9	94.9	89.9	85.1	72.8	56.3	76.2	81.6	85.5	83.0	90.3

CQS Q values

Q1	Q2	Q3	Q4	Q5	Q6	Q7	Q8	Q9	Q10	Q11	Q12	Q13	Q14	Q15
92.4	93.0	69.4	67.3	79.8	85.6	87.4	95.5	86.0	76.7	75.2	79.1	84.5	85.0	88.3

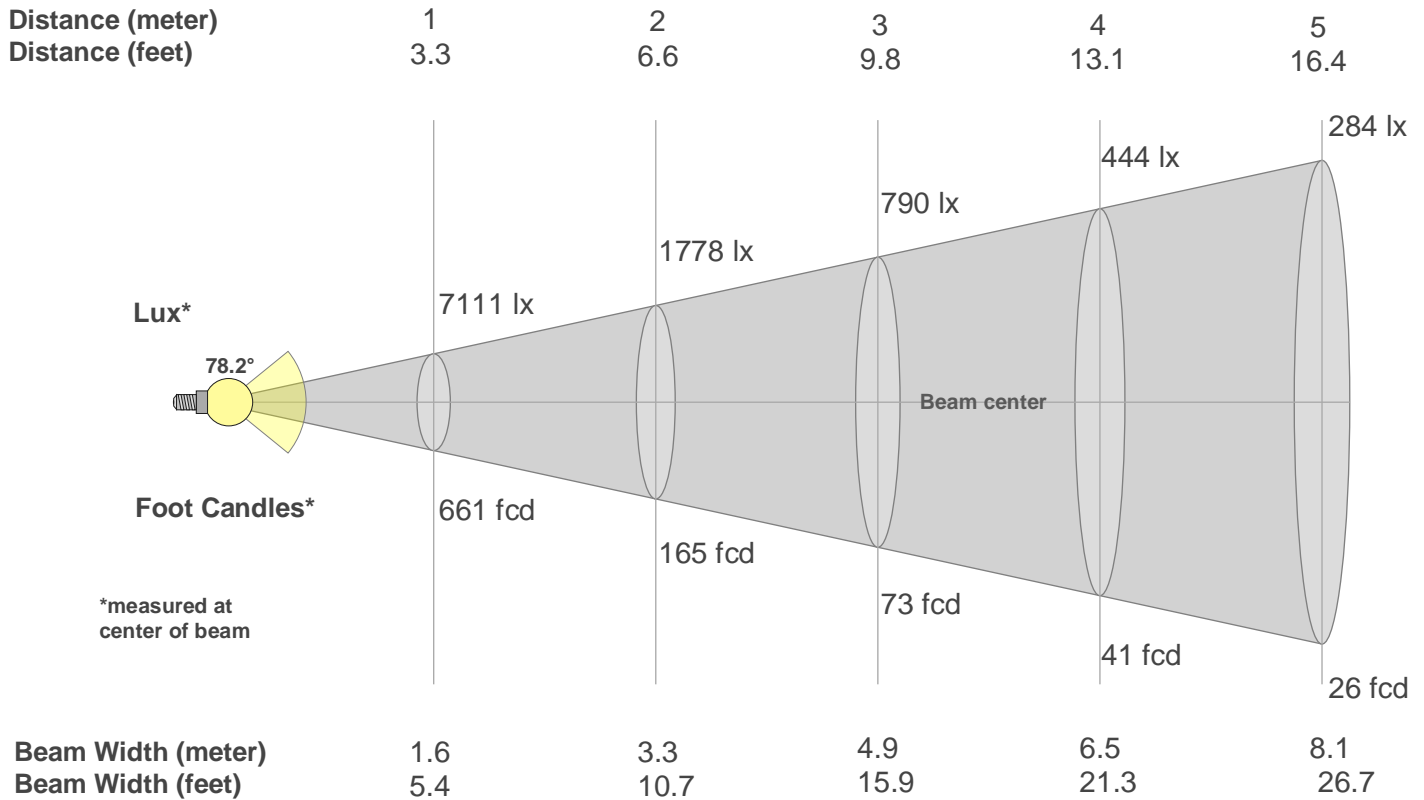
CQS: 81.2



Color Parameters

Color Temperature	Color Rendering Index	Red Component	Color Fidelity	Color Gamut	Color Quality Scale	Color Coordinate CIE 1931	Color Coordinate CIE 1931	Color Coordinate	Color Coordinate	Color Deviation from Black Body
CCT	CRI	CRI R9	TM30 Rf	TM30 Rg	CQS	x	y	u	v	Δuv
7416 K	84.5	58.5	81.5	100.9	81.2	0.303	0.307	0.199	0.303	-0.0063

Beam Details



Beam Intensities from 1-20m

m	1	2	3	4	5	6	7	8	9	10	11	12	13	14	15	16	17	18	19	20
ft	3.3	6.6	9.8	13.1	16.4	19.7	23	26.2	29.5	32.8	36.1	39.4	42.7	45.9	49.2	52.5	55.8	59.1	62.3	65.6
lx	7111	1778	790	444	284	198	145	111	88	71	59	49	42	36	32	28	25	22	20	18
fcd	660.6	165.2	73.4	41.3	26.4	18.4	13.5	10.3	8.2	6.6	5.5	4.6	3.9	3.4	2.9	2.6	2.3	2	1.8	1.7

Intensities in 0° C-plane

0°	5°	10°	15°	20°	25°	30°	35°	40°	45°	50°	55°	60°	65°	70°	75°	80°	85°	90°	95°
7111	7118	7138	7171	7229	7313	7429	7578	7778	8041	8294	8110	6943	4591	2057	617	173	34	1	0
100%	100%	100%	101%	102%	103%	104%	107%	109%	113%	117%	114%	98%	65%	29%	9%	2%	0%	0%	0%

Intensities in 90° C-plane

0°	5°	10°	15°	20°	25°	30°	35°	40°	45°	50°	55°	60°	65°	70°	75°	80°	85°	90°	95°
7111	7164	7217	6377	4819	3904	3408	2208	1202	773	572	449	357	266	189	112	47	10	0	0
100%	101%	101%	90%	68%	55%	48%	31%	17%	11%	8%	6%	5%	4%	3%	2%	1%	0%	0%	0%

Intensities in 180° C-plane

0°	5°	10°	15°	20°	25°	30°	35°	40°	45°	50°	55°	60°	65°	70°	75°	80°	85°	90°	95°
7111	7118	7138	7171	7229	7313	7429	7578	7778	8041	8294	8110	6943	4591	2057	617	173	34	1	0
100%	100%	100%	101%	102%	103%	104%	107%	109%	113%	117%	114%	98%	65%	29%	9%	2%	0%	0%	0%

Intensities in 270° C-plane

0°	5°	10°	15°	20°	25°	30°	35°	40°	45°	50°	55°	60°	65°	70°	75°	80°	85°	90°	95°
7111	7164	7217	6377	4819	3904	3408	2208	1202	773	572	449	357	266	189	112	47	10	0	0
100%	101%	101%	90%	68%	55%	48%	31%	17%	11%	8%	6%	5%	4%	3%	2%	1%	0%	0%	0%

Beam Angle 50%	Field Angle 10%	Cutoff Angle 2,5%	Intensity Ratio in 120° Cone	Intensity Ratio in 90° Cone
78.2°	110.1°	145.9°	87.4%	63.9%